



MOUNTAIN TOP UNIVERSITY (MTU)

Kilometre 12, Lagos-Ibadan Expressway, Prayer City, Ogun State

A monthly publication of the Editorial and Media Unit

MTU Holds webinar on Research and Publication for Improved Ranking

INSIDE THIS ISSUE:

<i>MTU Holds Webinar on Research and Publication for Improved Ranking</i>	1
<i>TIT-BITS from the Vice-Chancellor's Office</i>	2
<i>Technology Enhanced Pedagogy: MTU Organises Training for Staff</i>	3
<i>Staff Donates Dot Matrix Display Board to the University</i>	3
<i>Webinar on Contemporary, Sustainable Funding Models by Higher Education Institutions (HEIs) Holds in MTU</i>	4
<i>Photo News</i>	6
<i>September Birthday Celebrants</i>	8

A webinar on Research and Publication for Improved University Ranking was organised by the Centre for Research Innovation and Collaboration (CRIC), Mountain Top University, on the 4th of August, 2020.

The webinar featured the Vice-Chancellor of Landmark

University, Omu-Aran, Kwara State, Prof. T.M.A. Olayanju as the guest speaker. A warm welcome speech was given by the Vice-Chancellor, Mountain Top University, Prof. Elijah Ayolabi who was the Chief host. He reiterated the vital essence of the webinar after which Prof. Olayanju was given the floor. The VC, Land-



Prof. T. M. A. Olayanju, VC, Landmark University

mark University started by stating the basis and the metrics for the ranking of universities in the world which includes quality of academic delivery, quality of research endeavours, quality of community impact, high level of employability, among others.

Times Higher Education (THE) is one of the ranking bodies for universities all over the world. According to Prof. Olayanju, the features of the

average top 200 universities as given by Times Higher Education (THE, 2014) are:

- ♦ Having a student to staff ratio of 11.7:1.
- ♦ Having a total research income of \$229,109 per academic.
- ♦ Having 20% of staff coming from abroad.
- ♦ Publishing 43% of all its research papers with at least one international co-author.
- ♦ Having a student body made up of 19% international students.

Prof. Olayanju further shared the Covenant/Landmark University Model for achieving world-class status within its 15 years of existence. The model has these features:

- Standard infrastructural facilities.
- Standard administrative base.
- Strong research culture.
- Impactful research and development.

The Vice-Chancellor of Landmark University, Prof. Olayanju was not featured alone. He was featured alongside some of his key staff, who he gave the opportunity to speak about their own

Continued on next page

areas of jurisdiction. Prof. B.O. Adebesin, Director, Landmark University Centre for Research Innovation and Development, explained how research focus can be redefined for enhanced publication and income for the university. He emphasised the fact that research must be situational and targeted at solving problems.

Another speaker, Dr Olatunde Dahunsi, who is the Coordinator, Vice-Chancellor's Office (CVCO) at Landmark University, spoke on publication. He mentioned that research impact is measured by the number of citations a publication gets and that it also determines its visibility. While emphasising that scholars should publish

in quality peer-reviewed journals with high impact factor, Dr Dahunsi went ahead to give some of the characteristics of quality journals. They are: high impact factor, digital object identifier (DOI), clear editorial information, good online and print formats, rigorous peer review process, qualitative correspondence and quality language editing.

Indeed, the presentations were quite interesting and informative. In his vote of thanks, the Director, Mountain Top University Centre for Research, Innovation and Collaboration (CRIC), Prof. A.P. Olalusi appreciated the magnanimity of the Vice-Chancellor, Landmark University in accepting to honour

the invitation to speak at the webinar and added that the University will pay them a visit to solidify this relationship and possibly sign an MOU to pave way for more collaborations between the two universities. To re-echo the words of Prof Olayanju, "Absolutely nothing can stand on our way to world-class ranking", that is, if we are willing and dedicated.

The webinar session was excellently moderated by Dr O.E. Fayemi, the Deputy Director, Center for Research, Innovation and Collaboration (CRIC), Mountain Top University, Prayer City, Ogun State.

TIT-BITS from the Vice-Chancellor's Office

- ♦ MTU students to commence free coursera training.
- ♦ Staff and students to enjoy free TCRT training for eight weeks.
- ♦ Webinar training for all staff on contemporary and sustainable funding models for higher education institutions in Africa has been conducted.
- ♦ Staff and students getting ready for resumption
- ♦ No reported case of COVID-19 on campus

WORDS ON MARBLE

**GETTING WISDOM IS
THE WISEST THING
YOU CAN DO! AND
WHATEVER ELSE YOU
DO, DEVELOP GOOD
JUDGMENT.**

**- PROVERBS 4: 7
(NLT version)**

Technology Enhanced Pedagogy: MTU Organises Training for Staff

On the 13th of August, 2020, Mountain Top University under the able leadership of the Vice-Chancellor, Professor Elijah Ayolabi, held a webinar titled, "Technology Enhanced Pedagogy: Deploying Google Classroom for Pedagogy". Faced with the challenges brought about by the corona-virus pandemic, the webinar could not have been held at a more auspicious time.

Presenters at the webinar were Prof. K.I.T. Eniola of the Department of Microbiology, Joseph Ayo Babalola University, Ekiti State and Mr Jeremiah A. Balogun of the Department of Computer Science and Mathematics, Mountain Top University, Ogun State.

Prof. K.I.T. Eniola took the attendees through computer enhanced learning skills and tools.

He emphasised the fact that the world is in the digital age, so while the digital natives are navigating and cruising the paths with little or no efforts, the digital migrants must



learn to catch up by updating their computer and digital skills so as not to be left behind. Prof. Eniola went further to introduce the G Suite as a Google platform for academic institutions with several inter-usable applications for both synchronous (live) and asynchronous (recorded) interactions.

He listed a lot of things that can be

done using the G Suite such as creating classes using the Google Classroom, giving assignments and quizzes, grading assignments, building to-do lists, creating task reminders and scheduling meetings.

Mr Jeremiah Balogun's presentation gave more details on the workings of Google classroom - from how it can be created to how it should be navigated and what it can be utilized for. It was indeed an educative and interesting session.

The Vice-Chancellor appreciated the presenters for their time and efforts and promised that the University will continue in its efforts to get the staff and students fully equipped for the technologically driven learning that is the order of the day.

Staff Donates Dot Matrix Display Board to the University

A Dot matrix display board has been donated to the University by the Acting Head, Department of Physics, Mountain Top University, Dr S.O. Kareem.

The Dot matrix display is a digital electronic device which displays information

electronically on machines such as clocks, watches, public transport departure points, and in front of public buildings.

The board is mounted in front of



the College of Basic and Applied Sciences building. It shows a welcome message to all visitors to the college and also displays all the

academic programmes in the college in a scroll bar, one after the

other. This will, in no small measure, enhance the image of the University and improve the aesthetics of its environment.

The University, therefore, appreciates the wonderful gesture of Dr Kareem and

encourages other members of the University community to emulate this beautiful gesture.

Webinar on Contemporary, Sustainable Funding Models by Higher Education Institutions (HEIs) Holds in MTU

On the 31st of August 2020, a webinar was held for the entire staff of Mountain Top University with the title – Exploring the Strategic Adoption of Contemporary and Sustainable Funding Models by Higher Education Institutions (HEIs) in Africa. The webinar was in line with the policy of the university management to continue to empower members of staff despite the coronavirus pandemic, which has crippled global activities including educational and academic engagements.

The host, Professor Elijah Ayolabi, gave the welcome address where he outlined the importance of the webinar and efforts made by the university to continue to defy the global pandemic and ensure continuous academic activities. The Vice-Chancellor also enumerated the need for universities to generate internal funding through the multiple, but dormant avenues available within campuses instead of depending on the government and proprietors of privately owned institutions. The VC also maintained that higher

education institutions are eminently empowered and have the capacity for self-sustenance, if only they can activate and utilize all the available human and natural resources available to them.

In his presentation, the guest



Dr. Samuel Ebie, Swansea University, Wales,

speaker, Dr Samuel Ebie of the Business Department, School of Management, Swansea University, Wales, United Kingdom, introduced the topic and outlined its workability having been involved in various capacity building and innovative approaches to research and entrepreneurship in some universities in the world including Nigeria. In discussing the contemporary and sustainable funding models by higher education institutions, the guest speaker identified two major approaches, the Triple Helix Collaborative Approach and the

Quad Helix Innovative Models.

According to the guest speaker, the Triple Helix Collaborative Approach requires the combined efforts of three distinct groups, Academia-

Government-Private

firms/Industry. In this ap-

proach, the joint, collaborative

efforts of the three identified

groups are required for effective

sustainable funding for

higher education institutions.

The academia must play a role,

the government must play a

role and private

firms/industries must also play

a role. This way, there would

be a tripartite relationship,

which involves constant con-

sultation and periodic interface

among the three groups. How-

ever, it is important to note

that, in the tripartite relation-

ship, the academia plays the

most important role because

they initiate the relationship by

reaching out to the government

and private firms. He pointed

out that many higher education

institutions fail in this regard

because they do not have the

capacity to generate ideas for

the government and private

Continued on next page

firms' participation. Universities are the epicentre of knowledge and innovations; therefore, they should develop a workable model that will convince the government and private firms to participate in research, skills development and entrepreneurial schemes. The Triple Helix Collaborative Approach emphasizes collaboration maintaining that contemporary and sustainable funding models for higher education institutions cannot adequately be undertaken by universities or higher education institutions alone.

The second model for contemporary and sustainable funding approach for higher education institutions in Africa as identified by the guest speaker is the Quad Helix innovation models. This model is four-dimensional, University-Industry-Civil Society-Government. The listed groups, in the Quad Helix Innovation Model, must necessarily work in harmony to generate funds for a higher education institution. What is important in both models is the fundamental role that must be played by a higher education institution. Without higher education insti-

tutions playing the role of initiators or originators, the relationship may not take off. Therefore, higher education institutions are challenged to reach out to the government, private firms/industries and civil society groups for collaborations. The two later groups have a social responsibility to perform and what better ways than to commit or participate in training, research and the development of

knowledge and innovations.

At the end of the presentation by the guest speaker, some members of staff asked questions which were all adequately answered by Dr Samuel Ebie. Overall, the webinar offered great insight into the role universities should play in generating funds given the outlay of human and natural resources that abound in them.



MOUNTAIN TOP UNIVERSITY
Empowered to Excel

YOU DESERVE THE BEST EDUCATION

Applications are invited for admission into the following programmes for 2020/2021 Academic Session

Available Courses

College of Basic & Applied Sciences	College of Humanities, Management & Social Sciences
<ul style="list-style-type: none"> Applied Geophysics Biochemistry Biology Biotechnology Chemistry Computer Science Geology Industrial Chemistry Mathematics Microbiology Physics Physics with Electronics Food Science & Technology 	<ul style="list-style-type: none"> Accounting Business Administration Economics English Finance Industrial Relations & Personnel Management Mass Communication Music Public Administration Religious Studies Securities & Investment

HIGHLIGHTS

✓ Well equipped Laboratories

✓ Air-Conditioned Classrooms

✓ Scholarship for Students

✓ World-Class Health Facilities

✓ Comprehensive Library

✓ Serene and Secure Environment



International collaborations



World-class laboratories



Wifi enabled campus

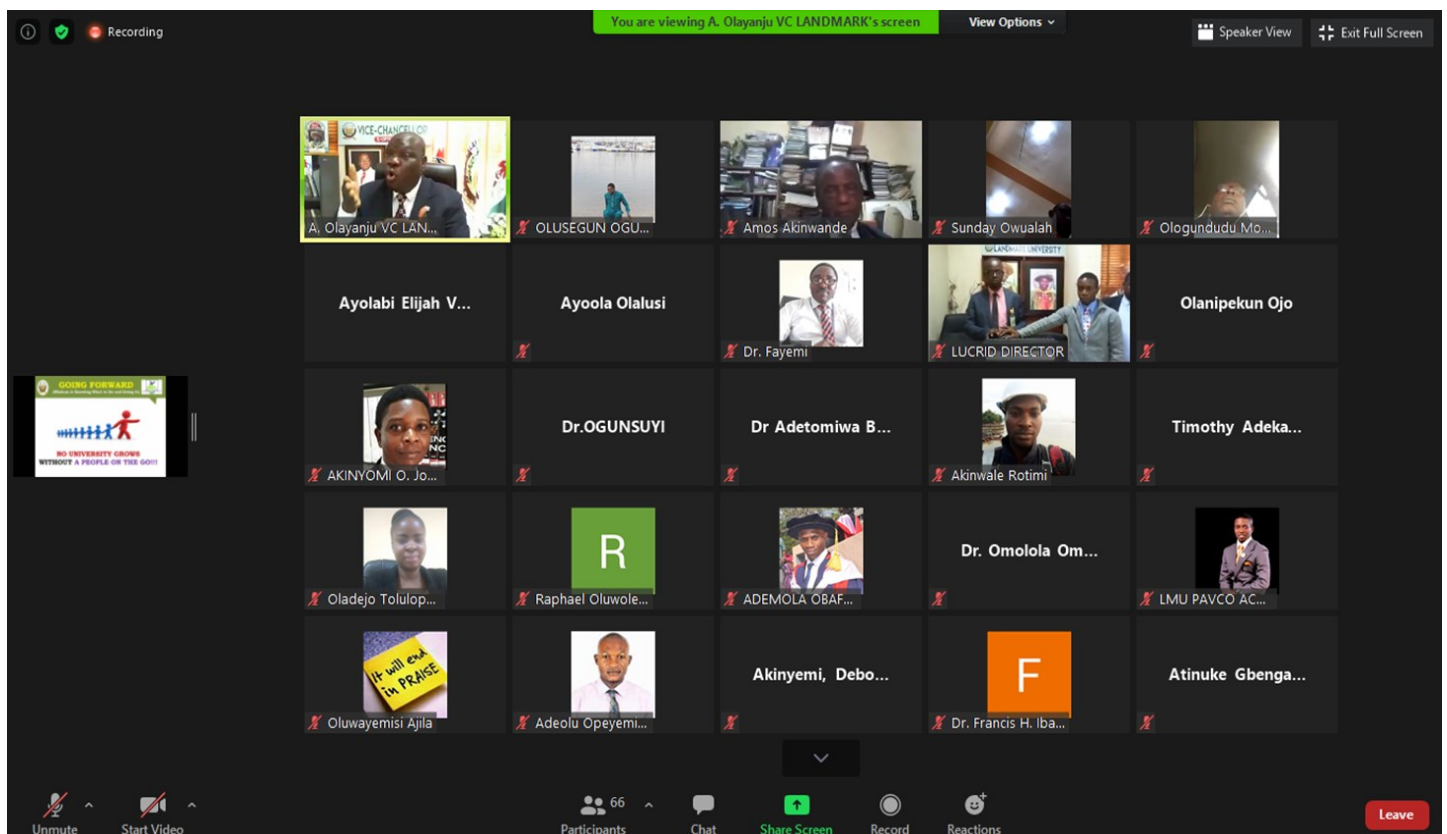
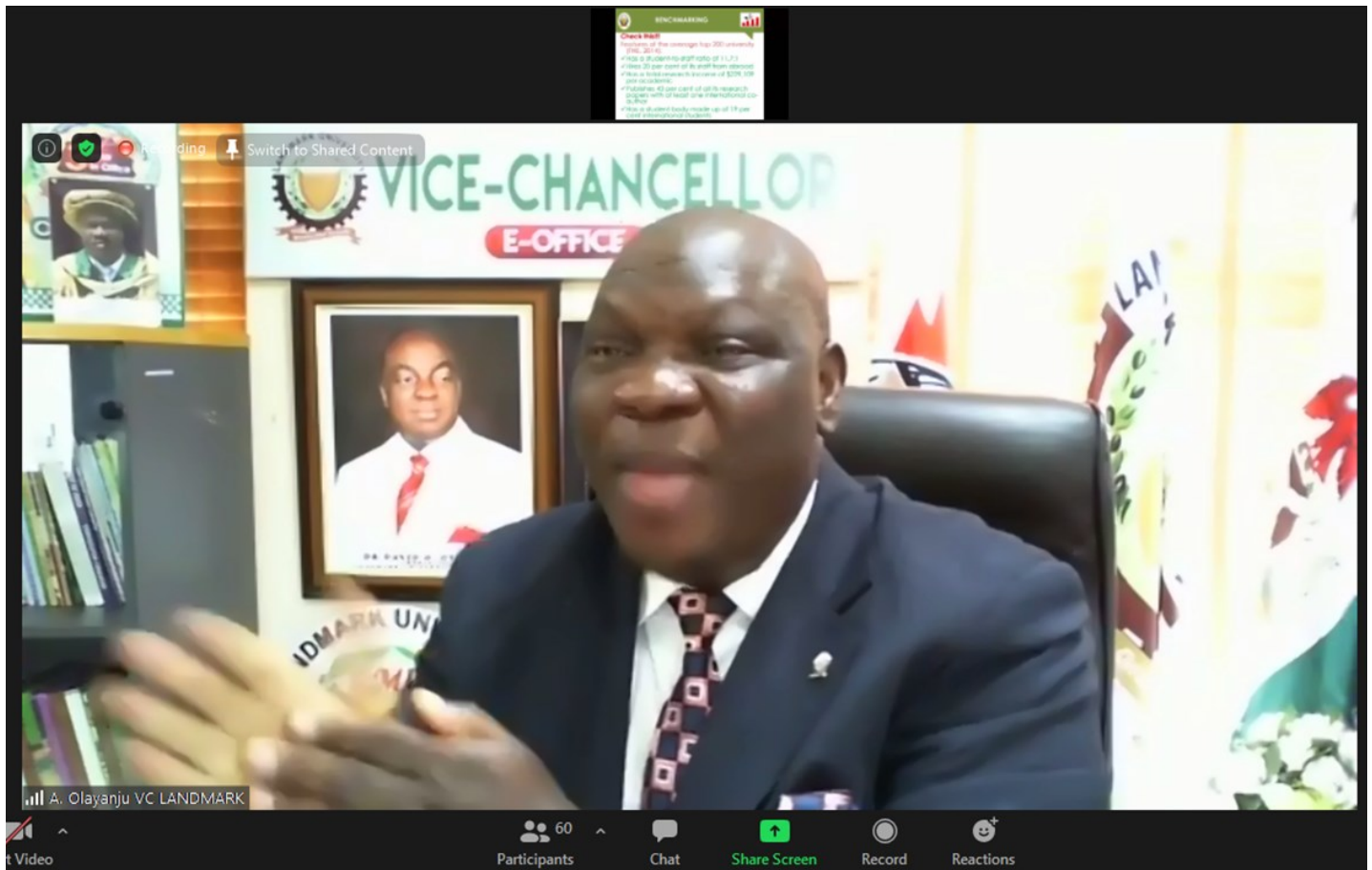
FOUNDATION AND PRE DEGREE PROGRAMMES ALSO AVAILABLE

CONTACT US

Mountain Top University,
Km 12, Lagos-Ibadan Expressway, Prayer City, Ogun State.
Phone: (+234) 8037414694, (+234) 8039505596
Email: support@mtu.edu.ng

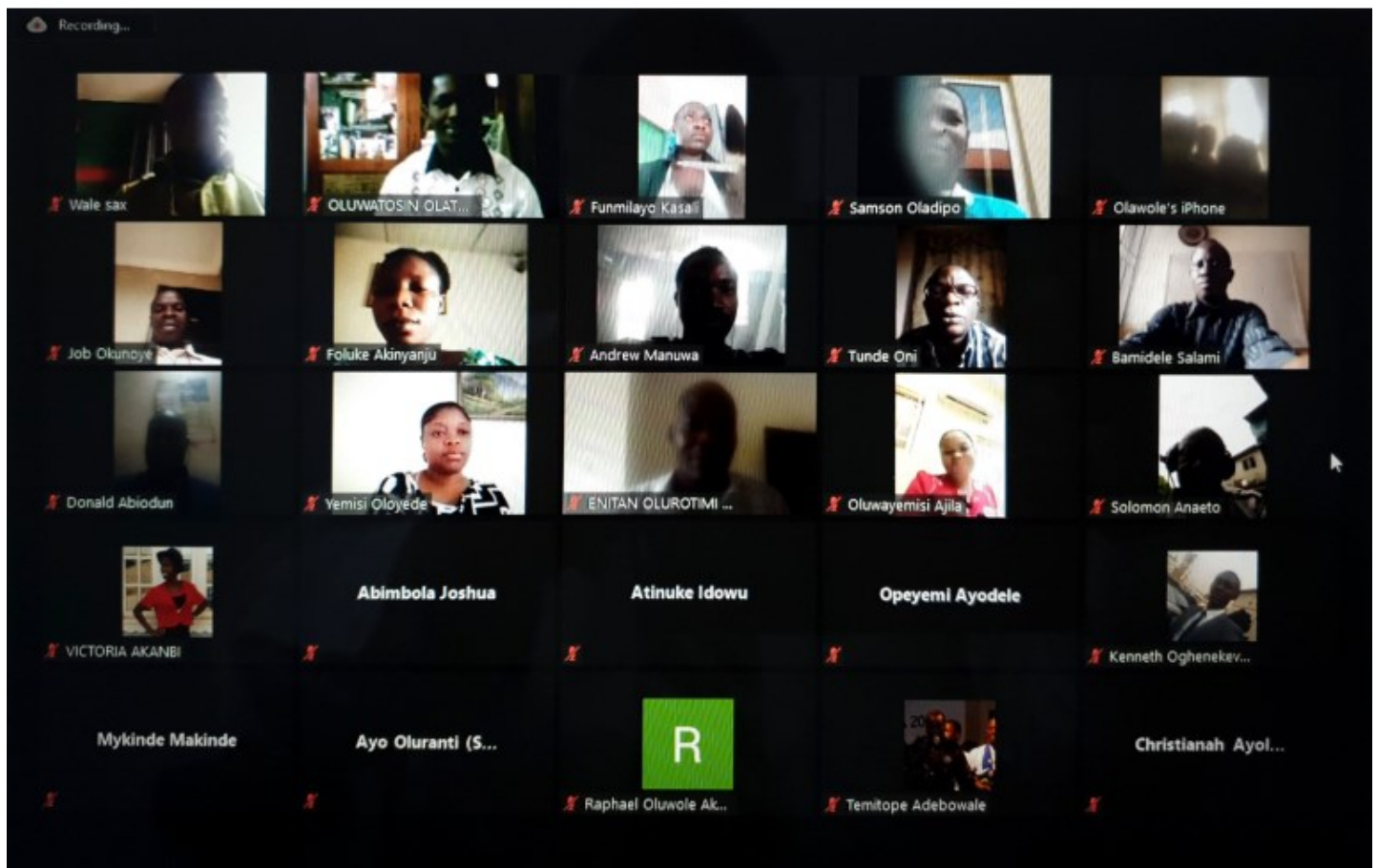
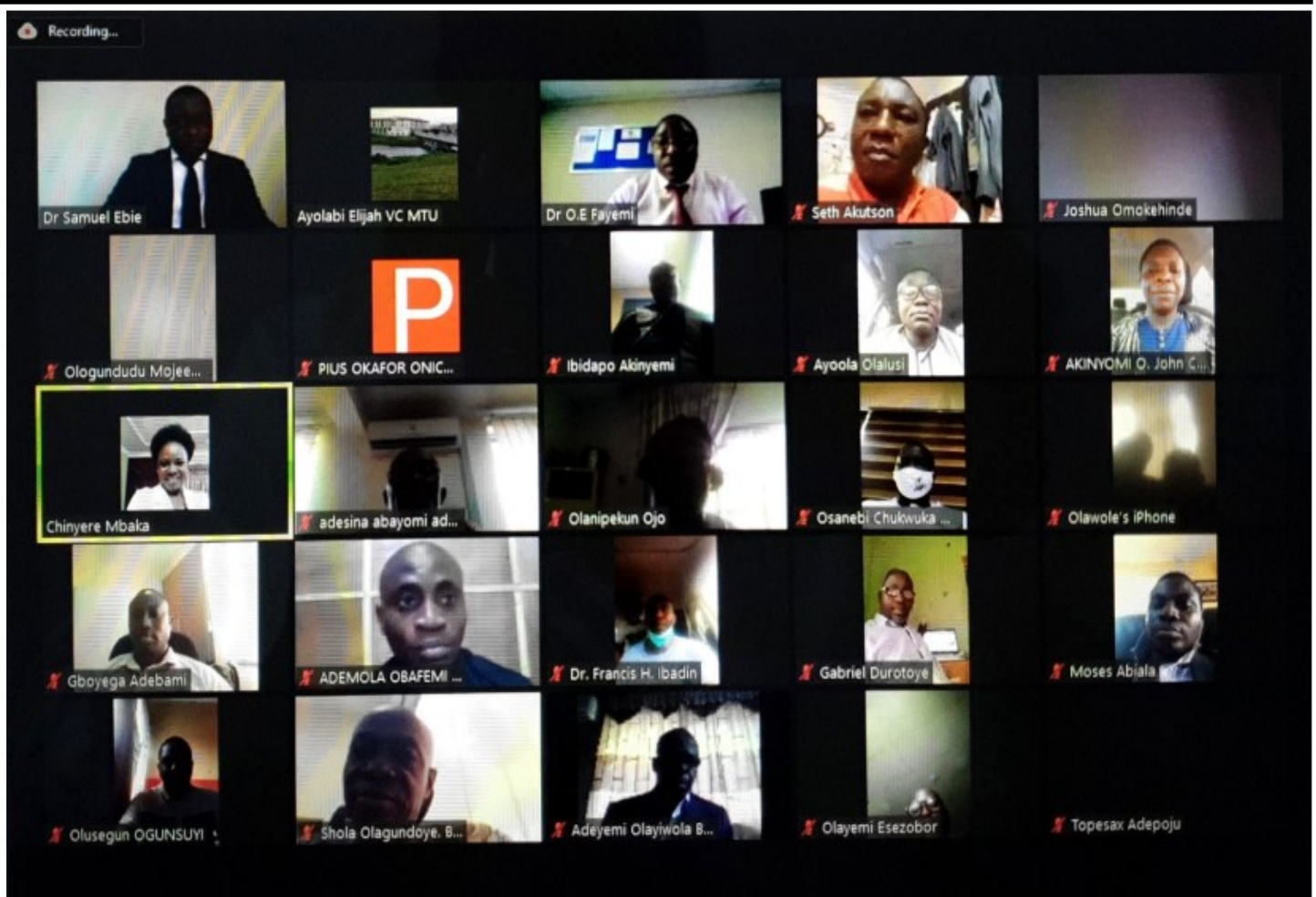
www.mtu.edu.ng

PHOTO NEWS



MTU webinar on research publication and University ranking

EMPOWERED TO EXCEL!



MTU webinar on strategic adoption of contemporary and sustainable funding models by higher education institutions in Africa

EMPOWERED TO EXCEL!

STAFF BIRTHDAYS FOR SEPTEMBER

DATE	NAME	DEPARTMENT/POSITION
September 3 rd	Dr Matthew Olayiwola Adewole	Computer and Mathematics
September 3 rd	Matthew Adeniyi Makinde	ICT
September 4 th	Darlington Chizormam Donald	Vice-Chancellor's Office
September 4 th	John Uzochukwu Daniels	Students' Affairs
September 8 th	Peter Akinwumi Kosoko	Registrar's Office/Deputy Registrar
September 10 th	Olufemi Ezekiel Ajala	Library
September 12 th	Enitan Olurotimi Olurin	Accounting and Finance
September 12 th	Dr James Olanipekun Ojo	Business Administration/Ag HOD
September 14 th	Olumide Faith Adesina	Vice-Chancellor's Office/Chaplain
September 15 th	Adewale Taiwo Emmanuel	Biological Sciences
September 16 th	Dr Moses Akindele Abiala	Biological Sciences/Dean Students' Affairs
September 17 th	Felix Olalekan Oyewole	Audit
September 22 nd	Samson Idowu Oladipo	Accounting and Finance
September 23 rd	Dr. Olusegun Ifeoluwa Ogunsuyi	Biological Sciences
September 24 th	Dr Ezekiel Folorunso Sodiya	Chemical Sciences/Ag HOD
September 24 th	Taiwo Olanike Marian Folorunso	Students' Affairs
September 27 th	Gboyega Ebenezer Adebami	Biological Sciences
September 27 th	Olugbenga Jimi Babinisi	Students' Affairs
September 28 th	Oluwayemisi Beatrice Ajila	Admission
September 29 th	Alice Alalor	Registrar's office
September 30 th	Akindele Akano Onifade	Computer and Mathematics

OUR MISSION

The mission of Mountain Top University is the provision of excellent facilities for the training of men and women in various academic, professional and vocational disciplines in an atmosphere that will enhance the simultaneous development of their spiritual, mental and physical faculties, in order to produce morally upright and academically sound graduates with specialised skills and value systems, who will be independent, invariably self-employable and who will be able to impact positively on the development (be it in leadership, academic, public and the industrial sectors) of their communities, the Nigerian society and the global community at large.

OUR VISION

The Mountain Top University is envisioned as a dynamic centre of academic excellence in the liberal tradition for the production of top-rate, morally sound graduates of distinctions who will be globally competitive for outstanding impact on the Nigerian societal and global development.

CORE VALUES

- Excellence
- Integrity
- Skill

EDITORIAL AND MEDIA UNIT MEMBERS

- Dr. (Mrs) Chinyere A. Mbaka (Chairperson)
- Dr. (Mrs) Tolulope O. Oladejo
- Dr. Olusegun I. Ogunsuyi
- Dr. Promise O. Adiele

EMPOWERED TO EXCEL!



Mountain Top University

Empowered to Excel

Km 12, Lagos-Ibadan Expressway,
MFM Prayer City, Ogun State

Begin the Journey to
Greatness

2020/2021
ADMISSION



For more information, call

08037414694, 08039505596

www.mtu.edu.ng

**APPLY
NOW**



EMPOWERED TO EXCEL!